



# **iLembe District Report For The fourth Quarter Of 2020/2021 (January – March 2021)**

## **EXECUTIVE SUMMARY**

**Provincial Council on AIDS Meeting**

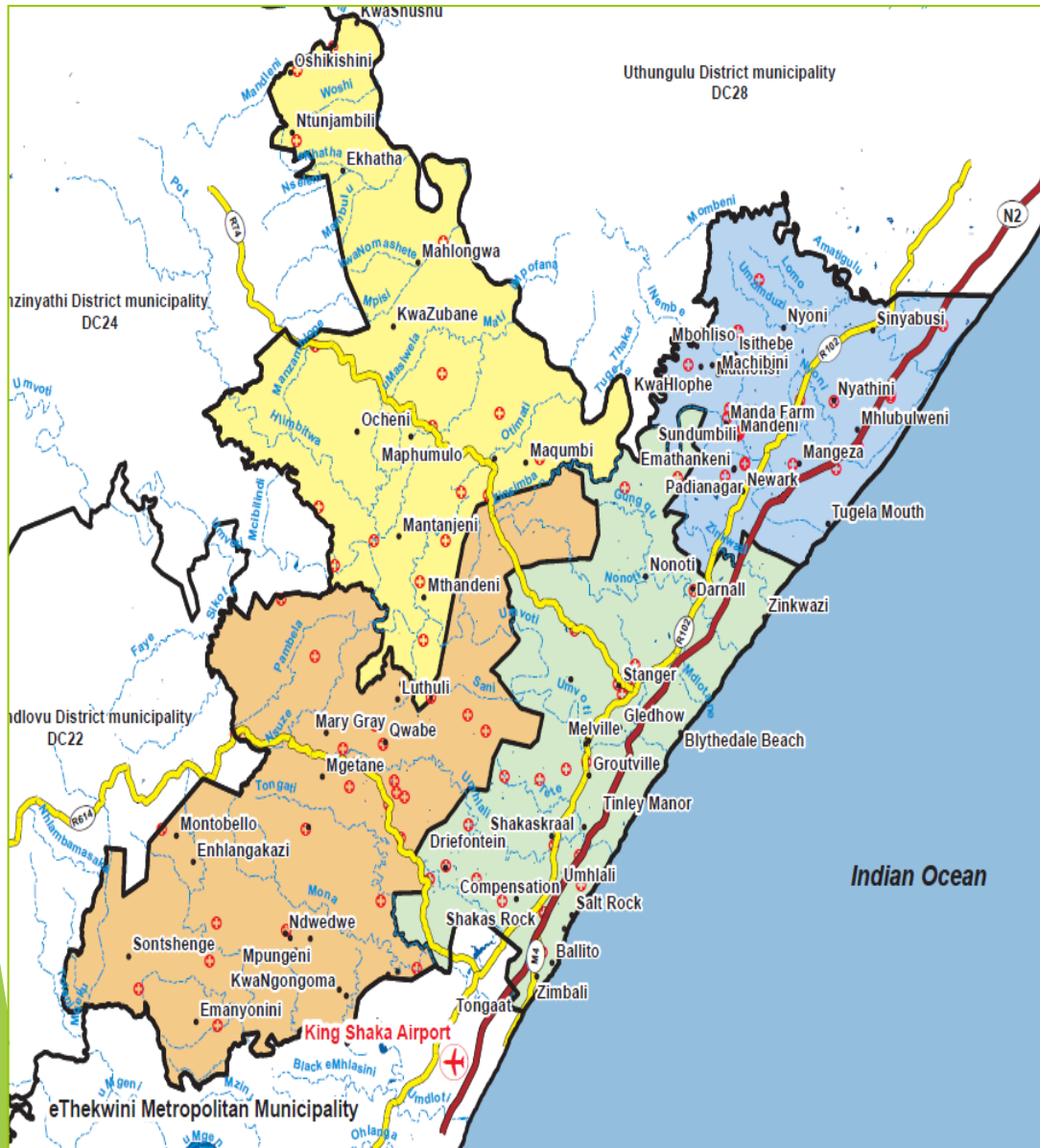
**Date: 07 July 2021**

**Presenter : Mayor Cllr. S.S Gumede**

# The Purpose Of The Presentation

- To provide progress on the activities of all Aids Councils at iLembe District and its family of municipalities i.e Ward Aid Councils (**WAC's**), Local Aids Councils (**LAC's**) and the District Aids Council (**DAC**) for the 4th quarter (**January – March 2021**)
- To provide feedback on the overall performance highlights, including some of the key successes; and
- To reflect on some of the key challenges, including some of the mitigation interventions going forward.
- iLembe District remains one of the District that is hugely affected by the social ills (poverty, inequalities and unemployment).
- In terms of the latest figures from StatsSA, our District is ranked as one the highest in terms of HIV/AIDS prevalence, as compared to other District within KZN.

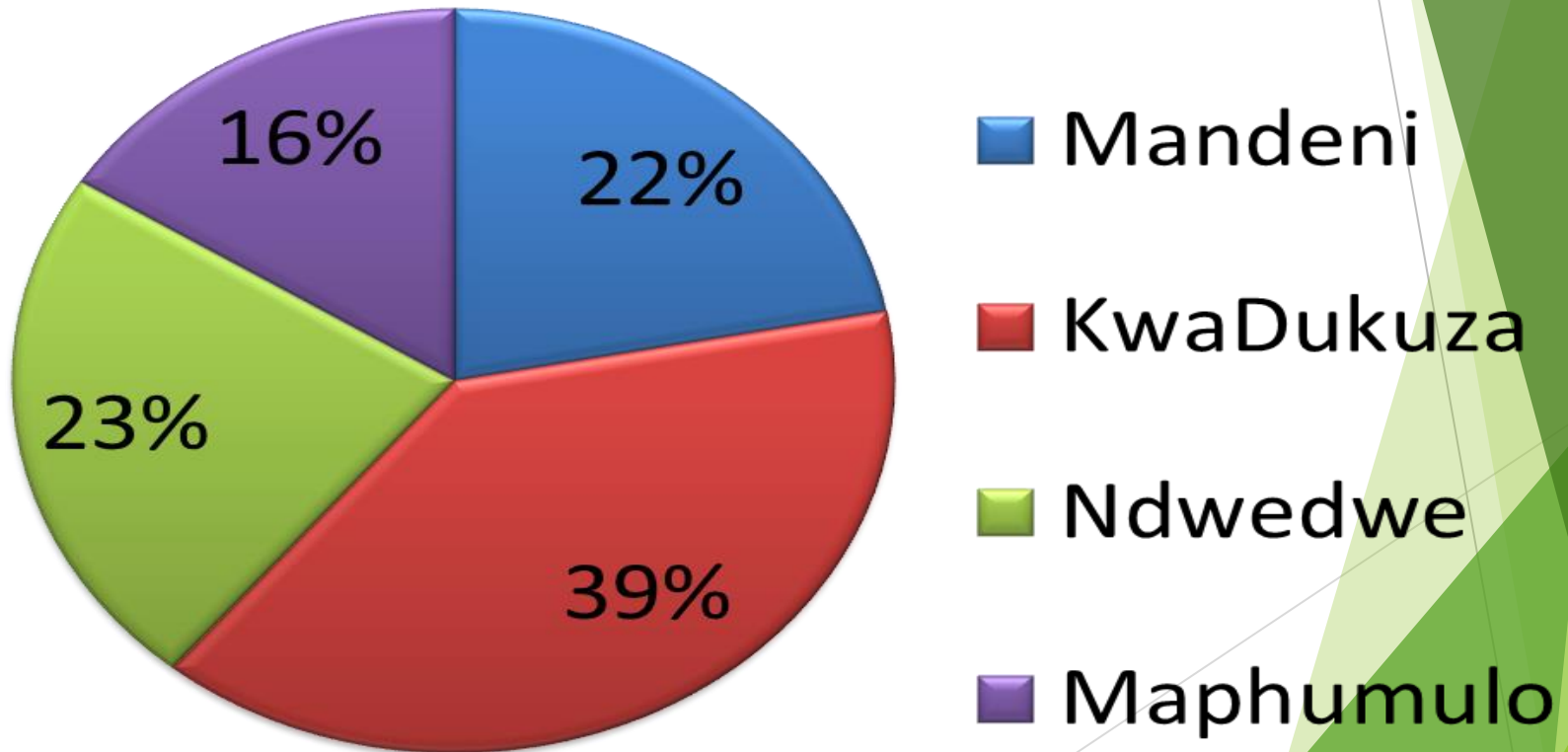
# ILEMBE DISTRICT OVEVIEW



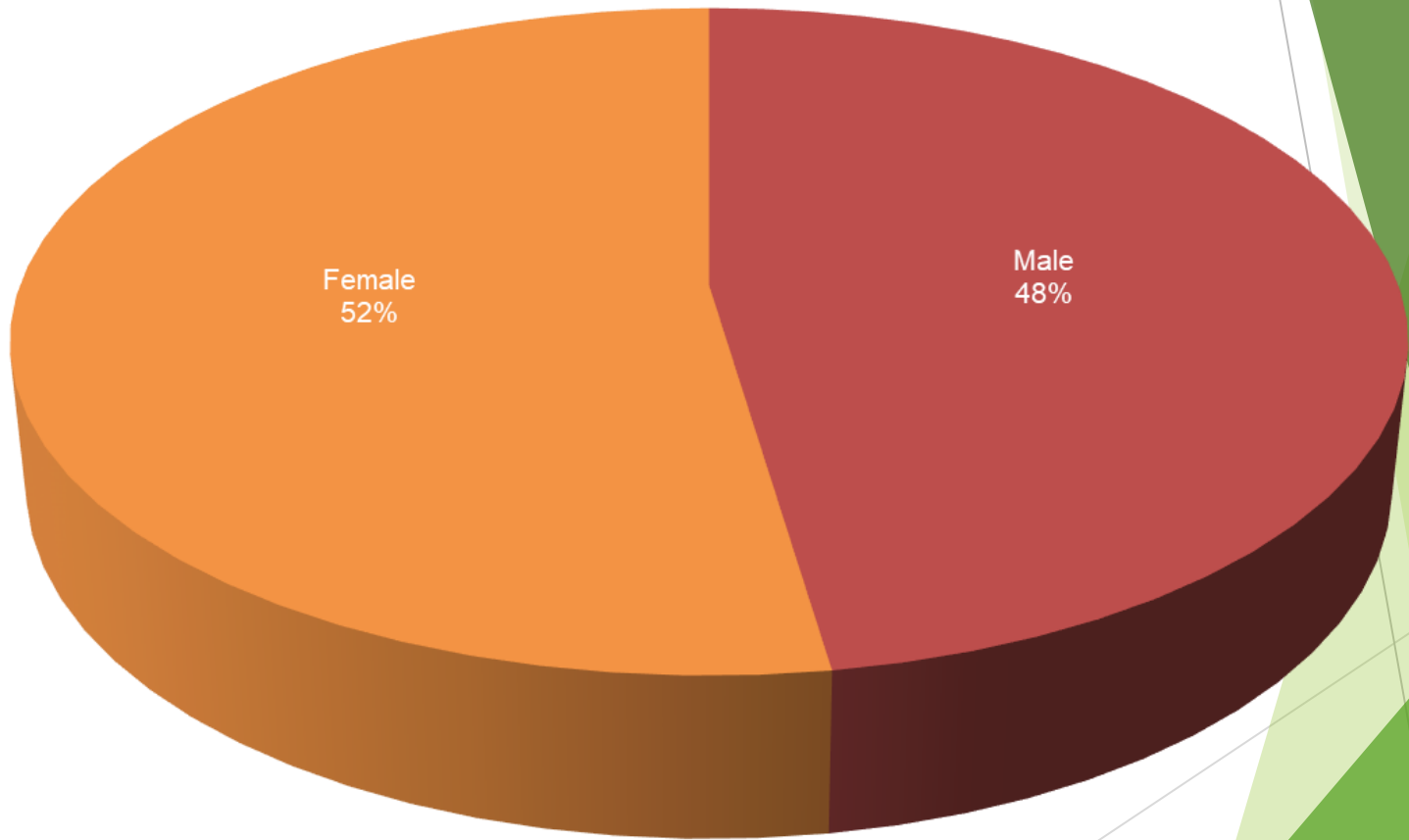
- East Coast of KZN
- Smallest of 10 Districts at 3260km
- Total population 657 612
- 38 Traditional Councils cover 63% of total area.
- Total wards - 77
- 4 Local Municipalities, namely, Ndwedwe, Maphumulo, Mandeni and KwaDukuza.

# Percentage Of Population Per Local Municipality

## % District Population



# DISTRICT POPULATION - GENDER PROFILE



# QUARTER 3 (JAN-MAR 2021) NARRATIVES

INDICATOR	CHALLENGES	KEY INTERVENTIONS
<b>1. Number of new HIV infections</b> <b>Target not achieved</b>	<ul style="list-style-type: none"><li>• Poor targeted testing.</li><li>• Poor index testing.</li></ul>	<ul style="list-style-type: none"><li>• Ensure that all facilities are correctly using index testing booklets.</li><li>• Set new positivity yield targets and closely monitor individual staff targets for HIV testing as well as for index testing.</li><li>• Outreach teams to test hard to reach populations.</li><li>• HTS services to be offered in hospitals especially family planning ante natal wings.</li><li>• Conduct HIV index testing for HIV children and male contacts for index cases.</li></ul>

# QUARTER 3 (JAN-MAR 2021) NARRATIVES

INDICATOR	CHALLENGES	KEY INTERVENTIONS
<p>1. Number of Medical male Circumcision</p> <p>Target not achieved</p>	<ul style="list-style-type: none"><li>• Only conducting mini camps and observing Covid 19 regulations as well.</li><li>• For the first two quarters and a bit of quarter 3, camps were suspended due to Covid 19 pandemic. There was no supporting partner to assist with the camps.</li></ul>	<ul style="list-style-type: none"><li>• increase the number and frequency of camps per facilities but still maintaining mini camps strategy</li><li>• Set and share facility targets as early as beginning of first month of Q1. Increase the number and frequency of camps per facilities but still maintaining mini camps strategy. Facilities and supporting partner to submit their plans to the district to share with counterparts.</li></ul>

## QUARTER 3 (JAN-MAR 2021) NARRATIVES

INDICATOR	CHALLENGES	KEY INTERVENTIONS
1. TB incidence	<ul style="list-style-type: none"><li>• Testing is not targeted to high risk and hard to reach populations</li><li>• Poor index testing</li></ul>	<ul style="list-style-type: none"><li>• Enhance community awareness about the signs and symptoms and importance of being screened for TB.</li><li>• Loud hailing to be done in hot spot areas</li><li>• Testing all index contacts</li></ul>
2. TB mortality	<ul style="list-style-type: none"><li>• Some patients die before they are initiated on treatment.</li></ul>	<ul style="list-style-type: none"><li>• Intensify TB screening at household level by CHWs.</li><li>• Health education to traditional healers about Tb signs and symptoms</li><li>• All positive cases to be initiated as soon as possible on treatment</li></ul>



## QUARTER 3 (JAN-MAR 2021) NARRATIVES

INDICATOR	CHALLENGES	KEY INTERVENTIONS
<p>1. Number of adults and children living with HIV on ART</p> <p>Target not achieved</p>	<ul style="list-style-type: none"><li>High lost to follow up. Poor filing system in some high volume facilities. Backlog in capturing. Low new ART initiations.</li></ul>	<ul style="list-style-type: none"><li>To set and share new TROA targets for all facilities. To assist facilities with setting of monthly and quarterly TROA targets.</li><li>Conduct duplication process on a quarterly basis to correct exaggerated lost to follow up. Train Facility OMs in the use of line lists. Ensure linkage to care by same day initiation and capturing.</li></ul>

# ACHIEVEMENTS/SUCSESSES

- Civil Society Organisations are very active in supporting all programmes that are aimed towards reduction of HIV/AIDS within the district and its family of municipalities.
- The CSO of iLembe managed to hold meeting in March 2021, the meeting was based on evaluating of the different sectors of CSF of iLembe, the meeting agreed that we need to go back to our sectors from local to the district to re fill the gabs ( that are existing in different sectors before the 25th March 2021
- In March 2021 the Office of the Premier of KZN facilitated the M & E induction for Civil Society for iLembe district, 80% of sectors participated and the induction was well progressive they have also made a meaningful contribution to resuscitation of most Ward Aids Councils.
- The LGBTIQ+ Plus managed to establish the district sector which is represented by 4 local municipalities under iLembe districts
- We also noticed that GBV is still a challenge which also need more interventions that will be led by men sector including women's sector.

# FUNCTIONALITY OF THE DAC, LAC's AND WAC's Q4 ( January– March 2021)

QUARTER	WAC	LAC	DAC
FY 2020/2021 Q4 —	<ul style="list-style-type: none"> <li>Mandeni: <b>18 out of 18 WAC's</b> have been resuscitated</li> </ul>	<ul style="list-style-type: none"> <li>LAC Meeting was held during Q4.</li> <li>The next LAC Meeting is scheduled for the First quarter of 12<sup>th</sup> MAY <b>2021</b></li> </ul>	<p>DAC Meeting was held during Q4</p> <p><b>The next LAC Meeting is scheduled for the First quarter of 17 JUNE 2021</b></p>
	<ul style="list-style-type: none"> <li>KwaDukuza: <b>21 of 29 WAC's</b> have been resuscitated</li> </ul>	<ul style="list-style-type: none"> <li>LAC Meeting was held during Q4.</li> <li>The next LAC Meeting is scheduled for the First Quarter <b>2021.</b></li> </ul>	
	<ul style="list-style-type: none"> <li>Maphumulo : All <b>11 out of 11 WAC's have not been resuscitated</b></li> </ul>	<ul style="list-style-type: none"> <li>No LAC Meeting was held during Q4.</li> </ul>	
	<ul style="list-style-type: none"> <li>Ndwedwe : <b>16 out 19 WAC's have been</b> resuscitated,</li> </ul>	<ul style="list-style-type: none"> <li>LAC Meeting was held during Q4.</li> <li>The next LAC Meeting is scheduled for the First quarter of 2021.</li> </ul>	

# OTHER KEY CHALLENGES AND MITIGATION INTERVENTIONS

KEY CHALLENGES	MITIGATION INTERVENTIONS
<b>1. Late submission and non submission of quarterly reports by Sector Departments and LACs to the DAC secretariat.</b>	<ul style="list-style-type: none"><li>• To clearly stipulate the time frames for submission of reports, including monitoring and evaluation thereof.</li></ul>
<b>2. Non functionality of some WAC's in most municipalities.</b>	<ul style="list-style-type: none"><li>• Ongoing engagements with all key sectors to conscientise them about the importance of well established WAC's.</li><li>• All municipalities to ensure that items on LAC's and DAC's become standing agenda items in all IGR Meetings.</li><li>• Identification of champions in all local municipalities to provide hands on support in all Ward Aid Councils (WAC's)</li></ul>
<b>3. Capacity challenges in some of the WAC's</b>	<ul style="list-style-type: none"><li>• Identification of other fieldworkers at a local level, to augment the current capacities in all Wards.</li><li>• Ongoing training programmes in all WAC's to stakeholders, on their expected roles and responsibilities</li></ul>

**Thank You**

The background of the slide is white with abstract green geometric shapes on the right and bottom edges. These shapes are composed of various shades of green, from light lime to dark forest green, creating a modern, layered effect. The shapes appear to be overlapping triangles and polygons that define the right side of the slide.